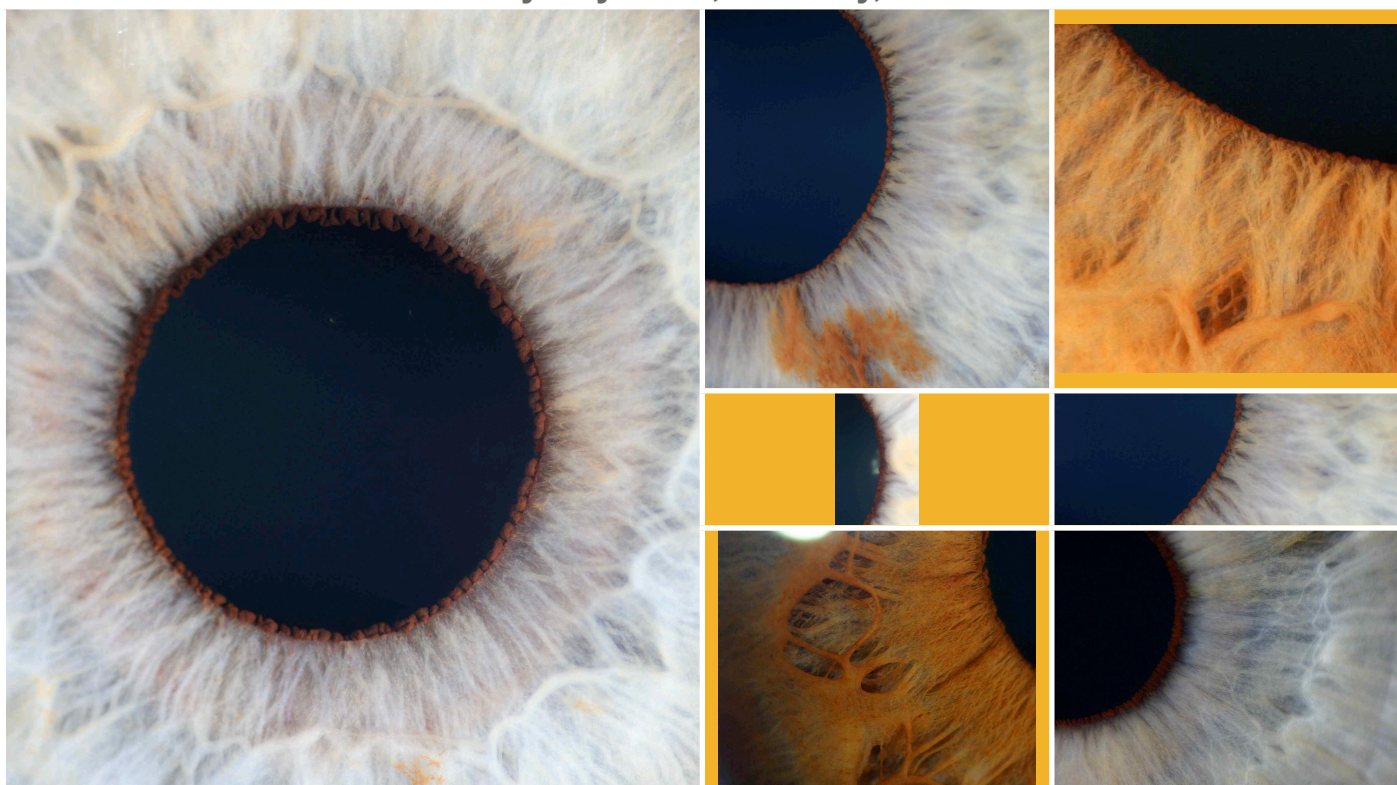


**International Iridology Seminar in Ireland**  
**The 4th Annual Advanced Iridology Seminar**  
with **John Andrews**  
Saturday 29th & Sunday 30th September 2007  
Kilkenny City Hotel, Kilkenny, Ireland



By popular demand topics will include in-depth & comprehensive coverage on all aspects of blood sugar levels and iridology, plus the latest research in iridology with a focus on how to identify priorities within the iris analysis to gain clarity for both the practitioner & patient.

According to the feedback from the 2006 seminar the information John presents with such clarity, warmth, depth of information and practical understanding has "stretched the boundaries of what is possible with iridology".

### **Saturday 29th September 2007**

AM - Introduction by Breda Gardner

#### **Blood Sugar Balance & Iridology Profiles by John Andrews**

The far-reaching influence on physical & emotional health of growing tendencies to erratic blood sugar levels in relation to Hypoglycaemia, Dysglycaemia or Diabetes mellitus are discussed in detail, together with accurate Iridology profiles.

#### **PM - Adrenal Gland Functions & Iridology Profiles**

Featuring the immune & endocrine systems, connections with progesterone, prolactin & blood sugar balance. The central importance of the adrenal glands, not only with the Hypothalamic-Pituitary-Adrenal (HPA) Axis, but also in relation to overall health is afforded in-depth consideration together with the latest in iris & IPB research and applications.

# **The 4th Annual Advanced Iridology Seminar**

## **with John Andrews**

**Sunday 30th September 2007**

**AM - The Collarette, Immunology & PNEI**

New research with Iris Structures, the IPB & Immune Cells with John Andrews.

**PM - The Ten Most Important Iris Pupillary Signs**

Identifying how to prioritize during the iris analysis for improved accuracy and patient clarity is ideal for the Clinical Practitioner – these ten points will empower both your practice and your patient's health.

**All seminar classes cover the following:**

- Comprehensive information on all solitary or connected iris, pupil, sclera & IPB signs and structures
- Modern and lavish high-resolution digital iris photography
- Treatment Indications in relation to nutrition, herbal medicine, Homotoxicology, Colourpuncture, homeopathy, structural therapies & emotional dynamics
- Clear explanation for immediate practical application

Saturday runs from 9.30am to 5.30am

Sunday runs from 9.30am to 4pm

All attendees receive an Instructional CD of the Seminar

All attendees receive a CPD certificate

Seminar Texts – The Collarette, Immune Cell & PNEI Chart & Endocrinology & Iridology by John Andrews – refer Publications section on website

To register & for further information on accommodation, travel details & payment logistics please contact:

[jerrygardner@eircom.net](mailto:jerrygardner@eircom.net)

For further seminar content information please contact:

[johnandrewsiridology@hotmail.com](mailto:johnandrewsiridology@hotmail.com)

To pay online and download seminar information please visit:

[www.johnandrewsiridology.net](http://www.johnandrewsiridology.net)

Click on "Seminars" section and scroll down to Seminar details.